

# Inspired to Work The Hertfordshire Picture March 2017

Tracy Noble – Youth Connexions LDD  
Team Manager  
Hertfordshire County Council

# What are we doing in Hertfordshire?

- Impartial careers information, advice and guidance
- Careers and Enterprise Company work in schools
- Work related learning including work experience
- Supported Internships in colleges and schools
- Supported employment
- Initiatives for those who are NEET

# Impartial careers information, advice and guidance

- Hertfordshire still has a Connexions Service
- 2012 Government gave duty to provide impartial IAG to schools and colleges
- Year 9 and Year 11 review attendance
- Write a 'Preparing for Adulthood' (PfA) Transition Plan
- All other services are traded

# Careers and Enterprise Company

- Announced in December 2014 by Right Hon Nicky Morgan MP, Secretary of State for Education (at the time)
- Employer led and set up to inspire and prepare young people for the fast changing world of work
- Key aim is to broker more effective relationships between employers and schools to enable young people to make better career choices

# Careers and Enterprise Company - Hertfordshire



- Hertfordshire Local Enterprise Partnership and Youth Connexions Hertfordshire working together
- Around 80 Hertfordshire Schools are involved with 19 of these being special schools
- Enterprise Advisers from local businesses support schools
- Mentoring programme being developed

# WRL including Work Experience

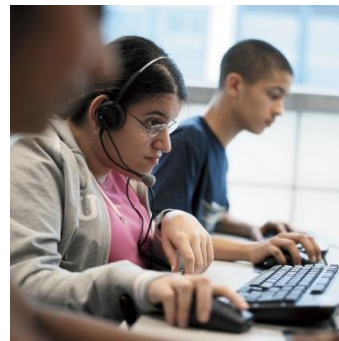
- Work Experience no longer statutory
- Many Hertfordshire schools do still purchase from Youth Connexions
- Careers days
- Employer visits
- Enterprise days

# Supported Internships

- All four Hertfordshire colleges offer Supported Internships
- 2 special schools run supported internship programmes
- Ellen will tell you more about this

# Supported Employment

- Youth Connexions LDD Team has a small team of supported employment advisers
- Work intensively with small caseload of young people 16-25 with LDD to find work





# Facts and figures

- In 2016 SE Team supported 23 young people to find paid employment
- Work with young people and families
- Support to find work and then keep it
- Use 'place, train and fade' model of Supported Employment
- Work with local employers before, during and after the recruitment process



# Initiatives for young people who are 'NEET'

- Support from Youth Connexions Personal Adviser
- Use of One Stop Shops
- Job vacancies on website
- Traineeships for those whom it is appropriate
- Supported employment
- Programmes for care leavers
- BBO Herts Youth Futures programme

# Contacts

- **LDD Duty Line**
  - Call: 01438 844999
  - email: [LDD.DutyYouthConnexions@hertfordshire.gov.uk](mailto:LDD.DutyYouthConnexions@hertfordshire.gov.uk)
- **Careers & Enterprise Company Enquiries**
  - Call Jacquie Gascoigne on: 01438 844115
  - E-mail: [jacquie.gascoigne@hertfordshire.gov.uk](mailto:jacquie.gascoigne@hertfordshire.gov.uk)
- **Supported Employment Enquiries**
  - Call Julie Tripcony on 01438 845318
  - E-mail: [julie.tripcony@hertfordshire.gov.uk](mailto:julie.tripcony@hertfordshire.gov.uk)
- **To contact Tracy Noble**
  - E-mail: [tracy.noble@hertfordshire.gov.uk](mailto:tracy.noble@hertfordshire.gov.uk)

# Supported Employment Case Studies

# Tommy's Story

- 20 years old
- Autism diagnosis
- Interested in becoming a postman
- Apsley mailroom with Serco
- Passed driving test
- Wanted a change – tried retail at Sainsbury's didn't like it
- Opportunity to try office work at Medivet – offered paid job fairly quickly
- Keep in touch





# Jess' Story



- 20 years old
- MLD and selective mute
- Loves horses
- Completed vocational profile
- Went to observe at stables she volunteers at
- Different girl – chatty
- Stables with apprenticeship vacancy
- She got the job
- Keep in touch

# Matt's Story

- Matt was happy to share his story, but not his photo
- 23 years old; diagnoses of Autism & MLD
- Dream job – retail, preferably Waitrose
- Contacted the 3 local supermarkets and only Tesco able to offer WEX
- Manager confirmed support but he did not get it
- SEA contacted employer and ensured all in place
- Wanted to try another placement and Waitrose agreed
- Supported through recruitment process
- Got job second time he applied
- Keep in touch